



# Entrepreneurial Leadership

---



**Prof Lesley Dobrée**

Executive Coach and Director of Entrepreneurial Leadership Programmes

**Nick Dearden**

HE Leadership Consultant

6 November, 2024

---

We often get asked what we mean by entrepreneurial leadership so here is a brief response. Entrepreneurial leadership is closely related to transformational leadership, in that an entrepreneurial leader has the appetite and ability to explore new opportunities, inspire others to deliver them and, in the process, lead change and innovation.

---

Entrepreneurial leaders, like all good leaders have passion, vision, focus and the ability to inspire and motivate others to work with them. Additionally they apply an entrepreneurial mindset to explore and enact new opportunities to achieve organisational goals.

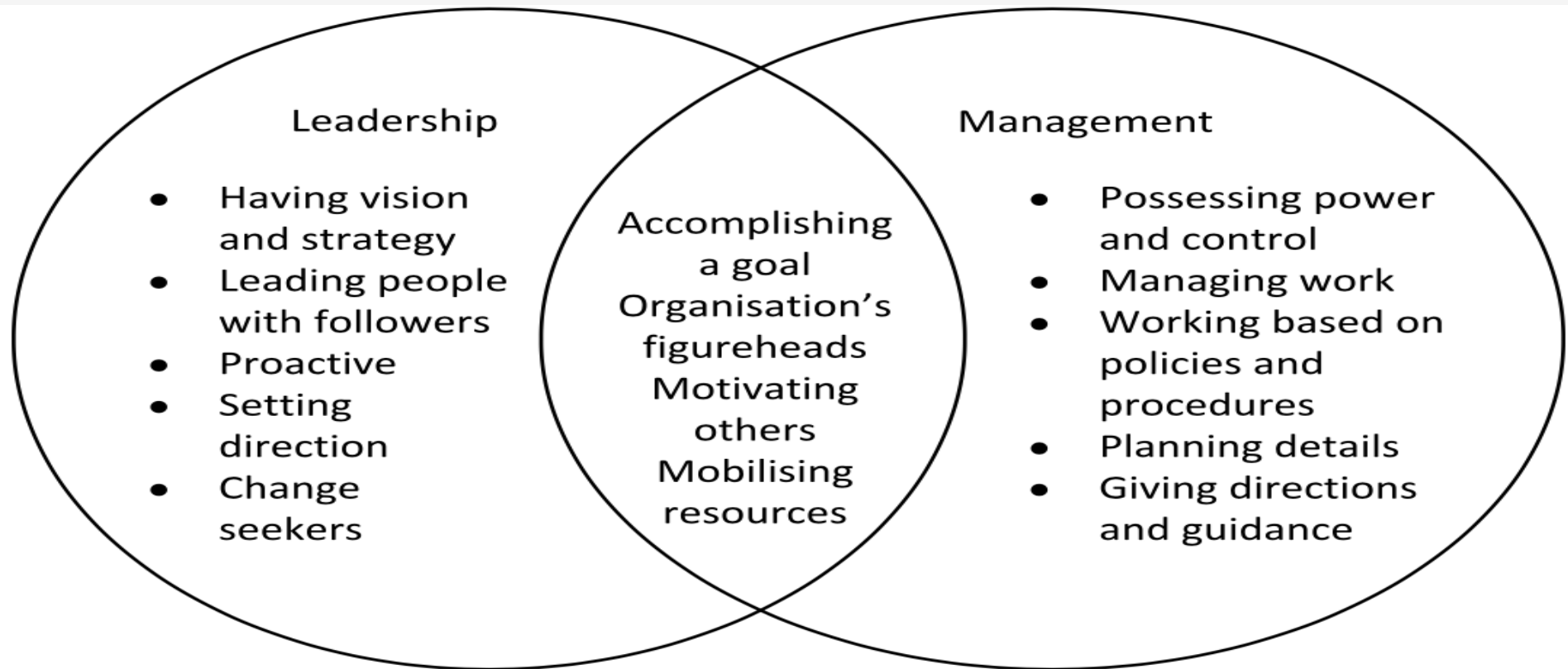
## Discussion

---

entrepreneurial leadership

Leadership with innovation  
mindset and behaviours

# 'regular' leadership and management



# Leadership (and Management)



## Entrepreneurial Leadership

We often get asked what we mean by entrepreneurial leadership so here is a brief response. Entrepreneurial leadership is closely related to transformational leadership, in that an entrepreneurial leader has the appetite and ability to explore new opportunities, inspire others to deliver them and, in the process, **lead change** and **innovation**.

Entrepreneurial leaders, like all good leaders have passion, **vision**, focus and the ability to **inspire** and **motivate** others to work with them. Additionally they apply an **entrepreneurial mindset** to explore and enact new opportunities to achieve organisational goals.

# Entrepreneurial Leadership



Innovation



Entrepreneurial mindset



Inspire others



Explore and enact new opportunities

## Demonstrating Entrepreneurial Leadership

- Be outward-looking, well connected and keep an open mind to new possibilities; create and seize opportunities when they arise.
- Know and trust your team and encourage team members to be innovative and creative in the way they work. Accept there are different ways of working to achieve shared goals.
- Celebrate successes but accept there will be some failures too. Promote a “no-blame” culture. Often the greatest learning occurs when things don’t go according to plan, besides nothing ventured, nothing gained!
- Be open-minded, create and use internal and external university networks to share and learn from those around you.
- Understand risk and what it really means. There are always risks associated with new initiatives, change and innovation BUT sometimes the greatest risk is doing nothing.

Boundaries to entrepreneurial activity in universities sometimes need to be challenged and pushed. Rules and regulations which obstruct new initiatives or responsiveness may need to be reviewed. Leaders have a role to play in the removal of such barriers to achieve greater success.



# Entrepreneurial Mindset

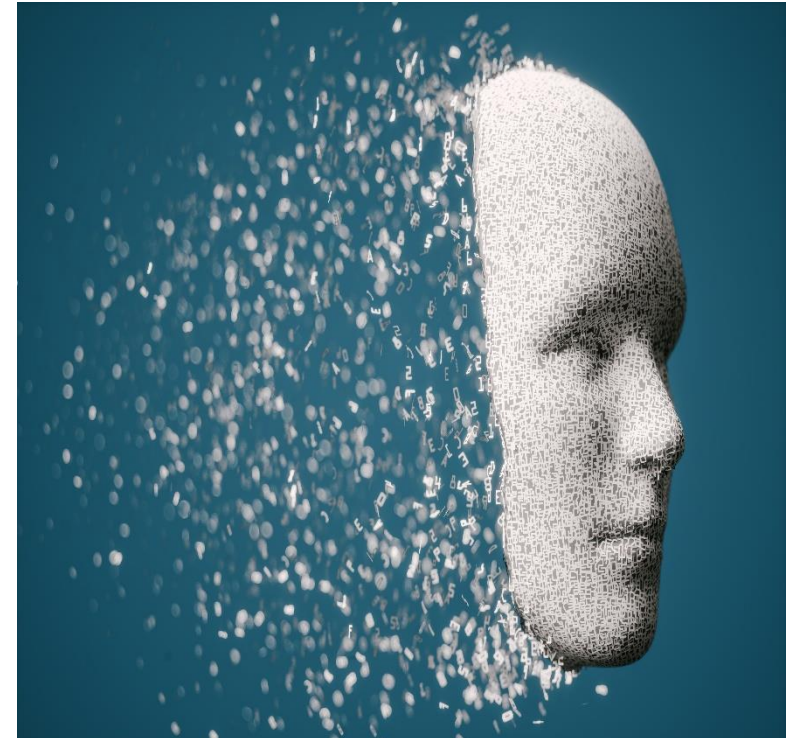
An **entrepreneurial mindset** refers to a particular way of thinking and approaching opportunities, challenges, and decision-making. It encompasses a set of beliefs, thought processes, and skills that enable individuals to identify and create opportunities, take calculated risks, and persist in the face of setbacks. In the context of higher education, fostering an entrepreneurial mindset empowers students and professionals to think creatively, adapt to changing circumstances, and view mistakes as learning opportunities. It's not just about skills; it's about how one behaves and applies those skills effectively

[Entrepreneurial Mindset - 10 Most Crucial Characteristics 2024 | Nexford University](#)<accessed 3.10.24>

[How to Inspire Entrepreneurial Thinking in Your Students | Harvard Business Publishing Education](#)<accessed 3.10.24>

[Entrepreneurial Mindset Education \(entrepreneurial-mindset.education\)](#)<accessed 3.10.24>

AI generated





# Some examples

---

MMU: RISE

[Rise x Future Me - Manchester Metropolitan University](#)

Staffordshire University: MSc Entrepreneurship  
[Entrepreneurship \(Peter Coates\) - Staffordshire University](#)

Keele: GCP

[Global Challenge Pathways - Keele University](#)

Kings College London:

[Entrepreneurship Institute](#)

Oxford University:

[Oxford Said Entrepreneurship Centre](#)

## Get Experience

Use the links below to access some of our Rise Self Study Packs linked to the Man Met Attributes and additional Manchester Met content.

**Autonomous** +

**Connected** +

**Sustainable** +

**Digital** +

**Enterprising** +

**Interpersonal** +

## Digital

- **Data Visualisation**
- **Questionnaire Design**
- **Behavioural Design**
- **DIY Games**
- **Univariate Analysis**
- **Augmented and Virtual Realities**
- **Demystifying Open Data**
- **Decolonising and Decarbonising Digital Society**
- **Data Literacy**
- **Introduction to Statistics**
- **Basic Netnography**
- **Podcast Production**
- **App Design**
- **Social Media Management**
- **Media and Misinformation**
- **Digital Research Methods**
- **Video Production Basics**

# Manchester Metropolitan University: RISE



← ↻ https://www.staffs.ac.uk/course/entrepreneurship-peter-coates-msc

Overview **Course content** Entry requirements Facilities Careers Teaching and assessment Fees Apply

## Modules

The tables provide an indicative list of the modules that make up the course for the current academic year. Each module is worth a specified number of credits. Our teaching is informed by research, and modules change periodically to reflect developments in the discipline. We aim to ensure that all modules run as scheduled. If for any reason a module cannot be run we will advise you as soon as possible and will provide guidance on selecting an appropriate alternative module.

Year 1 compulsory modules	
<a href="#">Company Building And Business Planning</a>	20 credits
<a href="#">Creating Value</a>	20 credits
<a href="#">Entrepreneurial Concepts</a>	20 credits
<a href="#">Entrepreneurial Design And Technology</a>	20 credits
<a href="#">Entrepreneurial Self</a>	20 credits
<a href="#">Entrepreneurial Storytelling</a>	20 credits
<a href="#">The Entrepreneurial Internship</a>	60 credits

staffordshire university msc entre x Peter Coates Foundation apply fi x

← ↻ https://petercoatesfoundation.org/apply-for-a-bursary/

**Peter Coates Foundation** Peter Coates Fast Forward Programme Apply For A Bursary Contact Us

To apply for a bursary from the Peter Coates Foundation, you must fulfil the following criteria:

- You must have submitted an application for the Peter Coates MSc in Entrepreneurship with Staffordshire University.
- You should be entering the Peter Coates Fast Forward Programme in good faith, with the intention of using the opportunities provided by the Programme to create a new business venture in the Stoke-on-Trent area.
- You must be resident and domiciled within the UK.

Priority will be given to:

- Applicants whose primary address is within 20 miles of either the Stoke-on-Trent or Stafford campus of Staffordshire University.
- Applicants from lower income households.
- Graduates of Staffordshire University.

# Staffordshire University: MSc Entrepreneurship



# Global Challenge Pathways

Enhance your *knowledge*  
Enhance your graduate CV

THIS IS KEELE

## Discover exciting elective pathways

Many of our courses include the option to choose exciting routes of elective study called Global Challenge Pathways. These allow you to explore current debates, enhance your understanding and employability, and complement your chosen subject.

These pathways are available to eligible undergraduate students and are just one of the ways in which we provide additional opportunities for Keele students to stand out from the crowd.

Global Challenge Pathways are Keele's ground-breaking brand of elective study, which eligible students can take alongside their core degree programme to complement and enhance their studies at Keele.

Each pathway is designed to give students an opportunity to engage with a global issue or challenge which connects them directly to current events and research from different subject areas.

Students on the pathways can take part in research-driven and external-facing projects which address current controversies and debates.

- Climate Change & Sustainability +
- Digital Futures +
- Enterprise and the Future of Work +
- Global Health Challenges +
- Languages & Intercultural Awareness +
- Social Justice +

# Keele University: Global Challenge Pathway



---

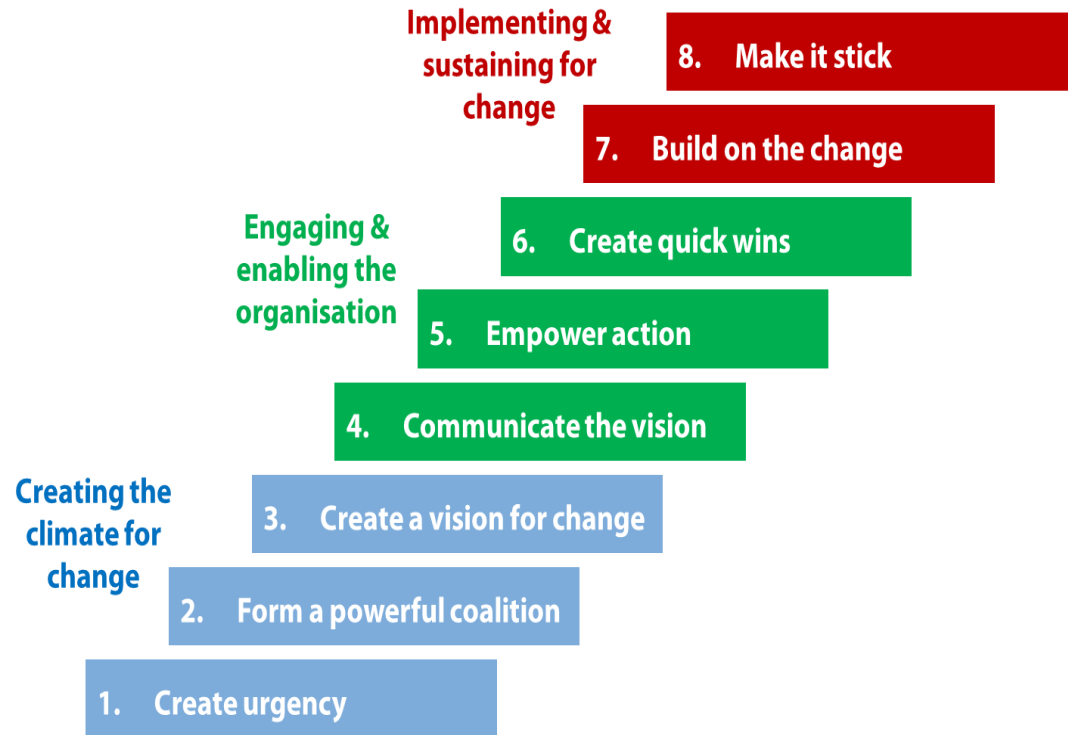
# Break out session 1



## Tools

- Leading Change
  - Developing Innovation mindset
-

# Kotter's eight stage change model: two visualisations



[Kotter.png \(1433x805\) \(wp.com\)](#)<accessed 8.10.24>



[The 8-Step Process for Leading Change \(wnccumc.org\)](#)<accessed 8.10.24>

Coming up at 3.15pm this afternoon:

Developing Innovation/Creative Mindsets

The logo for nceee, featuring the letters 'nceee' in a lowercase, rounded font. The 'nc' is black, and the 'eee' is orange.

WILL

BE

REVEALED

ALL





# Entrepreneurial Leadership

